

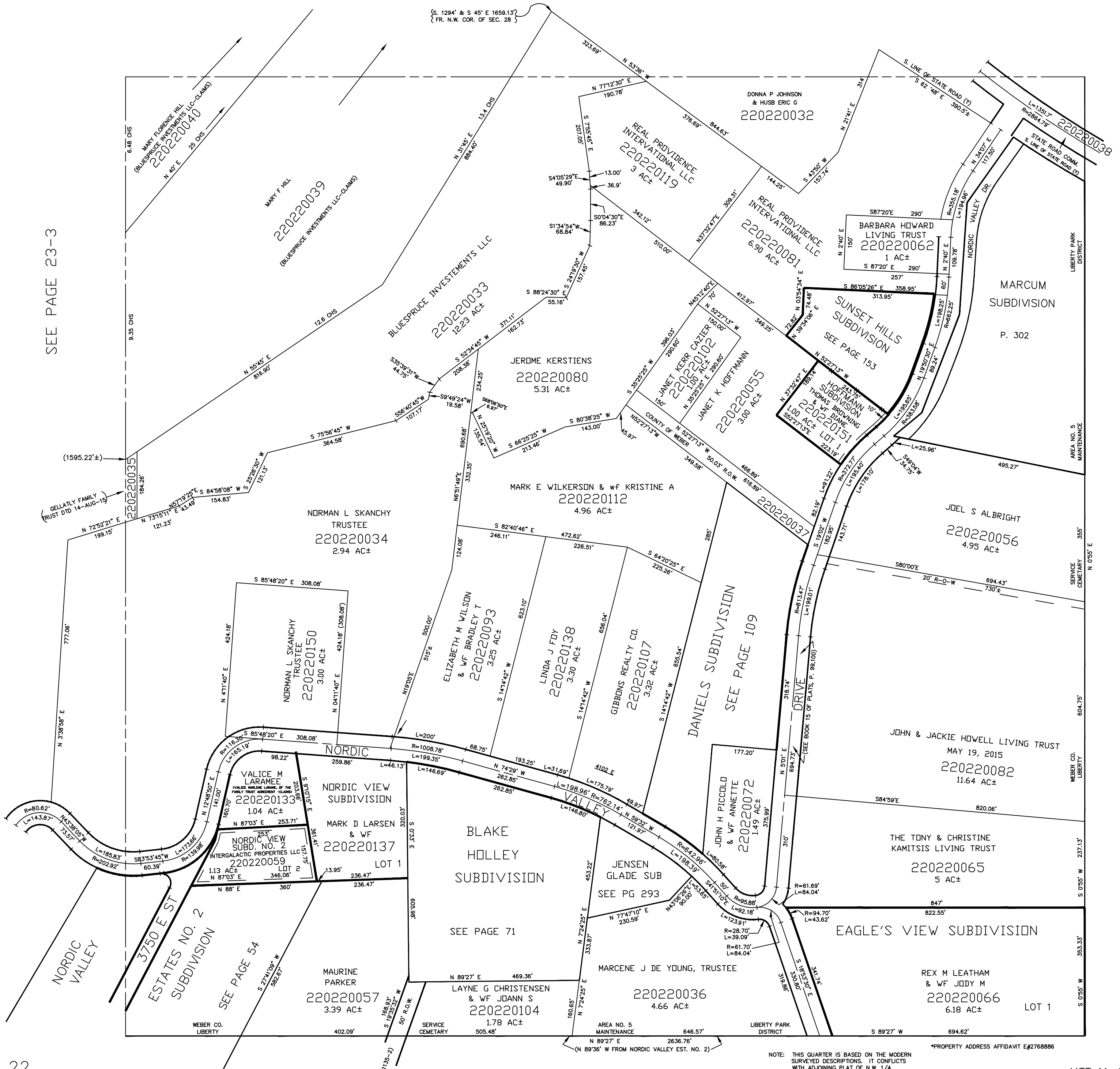
S.W. 1/4 OF SECTION 28, T.7N., R.1E., S.L.B. & M.

IN WEBER COUNTY
SCALE 1" = 200'

TAXING UNIT: 36

SEE PAGE 22-4

SEE PAGE 23-3



NOTE: THIS QUARTER IS BASED ON THE MODERN SURVEYED DESCRIPTIONS. IT CONFLICTS WITH ADJOINING PLAT OF N.W. 1/4

*PROPERTY ADDRESS AFFIDAVIT E#2768886